



PRINCESS PATTTER

A daily guide to cruise activities 

CORFU • FRIDAY, SEPTEMBER 26, 2008 • GRAND PRINCESS
Sunrise 7:31am • Sunset 7:31pm • Tonight's Dress: Smart Casual

Welcome to Corfu



The island of Corfu lies in the Ionian Sea, midway between Greece and Italy. The island has a long and colorful history. Colonized by the city-state of Corinth, Corfu has been ruled by the Romans, the Venetians, the French and the English. Corfu Town boasts fortresses bearing the insignia of

the Venetian Republic, an esplanade lavishly planted by the French during the Napoleonic Wars and an English cricket pitch. The island also boasts some of the finest coastal scenery in the entire Mediterranean.

Tender Information For Passengers Not On Tour

To avoid overcrowding at the tender embarkation area and to avoid discomfort standing in line waiting for a tender to take you ashore, we will be operating an organized tender ticket system on arrival. **When you and your complete party are ready to go ashore, please proceed to the Michelangelo, Deck 5 and collect a tender ticket from the Cruise Staff who will be in attendance from 8:15am.** Once in the lounge, a member of the Cruise Staff will direct you to the next available tender. This is for your comfort and your safety. There may be a slight delay at peak morning times. Tenders operate on a continuous service back to the ship and no tickets are required for the return journey. **Last tender boat departs shoreside at 5:30pm.** For tour information, please refer to page three of the Princess Patter.

FROM THE NAVIGATOR



Since departure from Dubrovnik the Grand Princess maintained south-southeasterly courses in the Adriatic Sea and then into the Ionian Sea, before transiting the Kerkira Strait between Corfu and Albania. This morning the ship made her final approach to the anchorage from the east, passing north of the island of Nisida. Once the anchor is dropped and formalities completed, passengers will be free to proceed ashore. Corfu lies to the west of mainland Greece and is one of the larger Greek Isles.

TIME CHANGE



Please be reminded that Ship's clocks were set **Forward One Hour** this morning, September 26th at 2:00am.

WEATHER:

Sky: Sunny
Wind: Northwesterly Gentle breeze
Temperature: 23°C - 73°F

SHIP'S AGENT IN CORFU

Cruise Vessel Operation
ISS Cruise Services
Phone: (0030) 210 4146662

TODAY'S HIGHLIGHTS

Events and activities not to be missed

ENTERTAINMENT

PRINCESS THEATER

Promenade, Decks 6 & 7 Forward

8:30pm & 10:30pm

MAGIC SHOWTIME

Starring: Master Illusionist

ALEXANDER

... Experience the Illusion!

MC: Cruise Director **Paul**

Audio or video taping is prohibited due to copyright.

No savings of seats please.

Last three rows reserved for passengers with limited mobility

ENTERTAINMENT

VISTA LOUNGE

Promenade Deck 7 Aft

8:30pm & 10:30pm

(Show will be repeated at 8:30pm and 10:30pm on September 27)

THE PRODUCTION SHOW

SHAKE, RATTLE & ROLL

"A journey through some rockin good times"

STARRING: THE GRAND PRINCESS
SINGERS AND DANCERS

MC: Deputy Cruise Director **Stu**
Music by: The Grand Princess Orchestra

FEATURED TODAY ...

GUEST ARTIST SHARIE HATCHETT BOHLMANN

TONIGHT! 6:30 - 8:30 P.M.

Tonight, in the Art Gallery, Deck 5,
the internationally acclaimed


Romance Artist, will personalize several sold paintings from the first Gala Art Connoisseur Auction! Come see how you too can become a collector of these incredible original works and have Sharie personalize your work - a memory to enjoy for years to come!

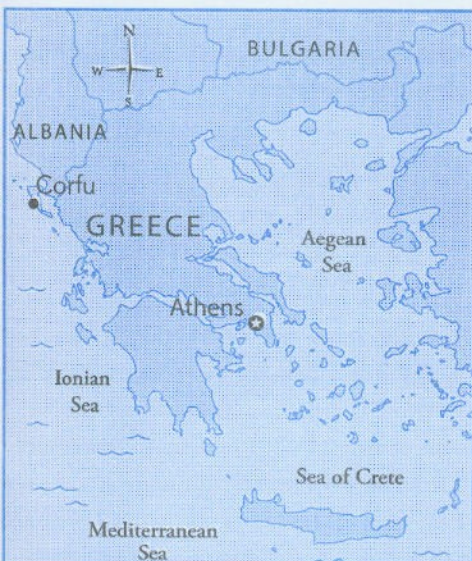


PRINCESS CRUISES

escape completely®

CORFU

Adventures Ashore® Port Guide 



GREECE AT A GLANCE

SIZE: Approximately 50,943 square miles, slightly smaller than Alabama

POPULATION: 10,706,290
(July 2007 est.)

LANGUAGE: Greek 99% (Official),
English, French

CAPITAL: Athens

TYPE OF GOVERNMENT:
Parliamentary Republic

CURRENCY: Euro (EUR)

TIME ZONE: GMT + 2

Although Corfu is certainly a Greek island, it lies between Italy and Albania in the Ionian Sea.

Corfu is also unusually lush and fertile, well watered, and a tad cooler than most Greek Isles. The subtle gray-green of the olive tree is everywhere, making olive oil a principal export. The entire history of Corfu and the Ionian group of islands is very distinct from the rest of Greece. Among many the foreign influences here are British, French and especially Venetian. We know that some of the earliest colonists on Corfu — called Kerkyra by the Greeks — came from wealthy Corinth. By position, it was an ideal highway between Greece and the West, and prosperity came along quickly.

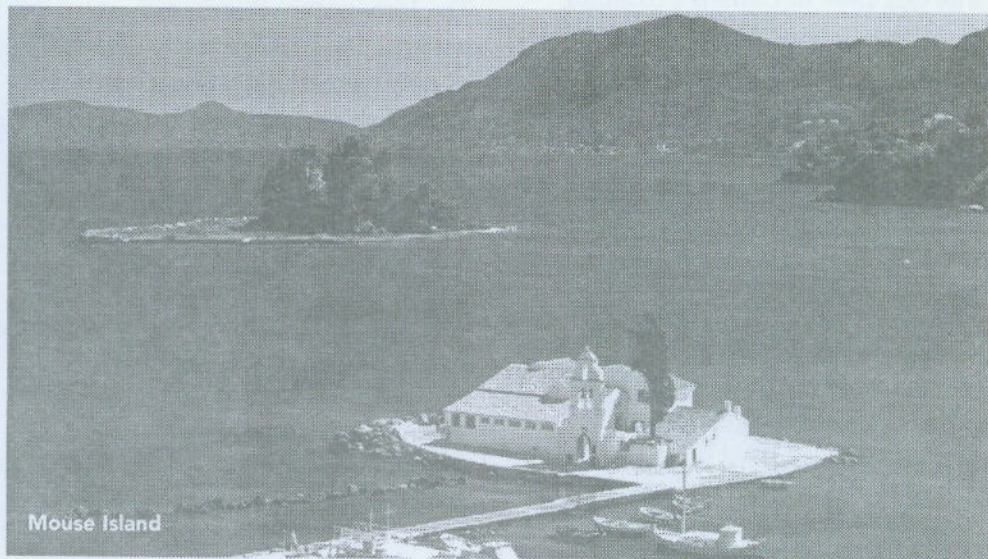
Corfu soon became a challenger of its mother city; in fact the trade rivalry with Corinth was so intense that their two fleets fought the first recorded naval battle in Greek history around 664 B.C. The same rivalry, two centuries later, helped to ignite the Peloponnesian War, when Corfu appealed to Athens for aid against Corinth. The island was a good friend to the Roman Empire, and Octavian made it a naval station for his operations against Marc

Antony and Cleopatra.

Along with its unfailing affluence, Corfu has had a stormy history, marked by constant changes of ownership and a serious threat from pirates. In 1386, the islanders asked for the protection of the Venetian Republic, which lasted until the Republic itself was abolished in 1797. Venetian rule was not always harmonious, but the administration was stable and fairly honest. The olive trade flourished, since the oil-hungry Venetians paid a bonus for each new olive tree planted.

Intermittent attacks by the Turkish navy were repulsed, and Corfu served as a refuge for Greek artists and scholars fleeing from Turkish advances elsewhere. These educated exiles carried on a long tradition of learning, and founded the first Academy in modern Greece.

During the Napoleonic Wars, the Ionian Islands were briefly under French control, with a modernized bureaucracy and a degree of self-government. Several building



Mouse Island

ABOUT YOUR PORT GUIDE

This is your guide to Corfu, specially prepared by Princess Cruises. This guide is intended to assist you if you are on a shore excursion, touring independently or doing both.

Please note that the information provided is general in nature and is subject to change.



projects substantially beautified the capital.

After the defeat of the French, the most interesting half-century of Corfu's history began. Great Britain established a protectorate over the islands, and Corfu became the governmental seat of the British High Commissioner. The native senate and assembly were retained, with a strict but creative administration. Much of what you see today on Corfu took shape during this period. Britain withdrew in 1864, and the Ionians joined the Kingdom of Greece.

The Old Town of Corfu is a charming place between the Old and New Fortresses or Citadels, with a delightful garden zone, the Spianada, for strolling and relaxation. The palms and eucalyptus trees were planted during the French period, and the neo-classical rotunda honors the memory of Sir Thomas Maitland, one of Britain's High Commissioners.

Among the commemorative monuments and statues here is one to Corfu native John Kapodistrias, Greece's first president. He is buried in the Platitera Monastery nearby.

The pretty arcaded terrace along the western side of the Spianada resembles the Rue de Rivoli in Paris. Its designer was Mathieu de Lesseps, whose son built the Suez Canal. Along the northern side is the neo-classical Palace of St. Michael and St. George, once the residence of the British administrators. Today it houses a museum of Asian Art, which includes more than 10,000 beautiful items, especially from China and Japan.

Also here on the Spianada you will find the famous cricket pitch of Corfu. The people adopted the British game with gusto a century ago, and continue to field their own teams.

The Old Citadel occupies a camel-shaped wedge of land that once contained the entire town. The fortifications have been repaired and rebuilt many times; today you see what the Venetians built in the 16th century. A small canal defends the main bastions, and a small protected anchorage — the Mandraki — lies to the north. The winged lion of St. Mark is a frequent reminder of the Venetian presence.

A walk through the Old Town is a real treat. Most of the protective walls have been demolished, but the narrow, winding streets remain. Tiny squares, high arcaded houses, and richly decorated churches are everywhere, each one unique.

The most important cathedral is the Church of St. Spyridon, the island's patron. The 16th-century church, with its tall bell tower, houses the silver coffin of the saint, an early martyr-bishop from Cyprus. Nearly half the boys born on Corfu are named Spyridon, after the patron. Because they did not show proper respect for the saint, French administrators lost popularity with the native population in 1799, despite their efficiency.

Not far from the old Ionian Parliament building is the Municipal Theater. During World War I, it was the home of the Serbian Government in exile, as well as the refuge of the battered Serbian army as it

reorganized for the Salonika Front. And it was from here in 1917 that the "Pact of Corfu" proclaimed the formation of the Yugoslav state. The nearby Archaeological Museum has a fine collection of ancient treasures from the island. The most important item is the Gorgon pediment, taken from the Temple of Artemis, which dates from 6th century B.C.

Outside of Corfu City, there are many beautiful places to visit. The villa of Mon Repos was built near the ancient necropolis. Prince Philip, Duke of Edinburgh, was born here in 1921.

Further south, the wonderful site of Kanoni may be the most beautiful spot in Greece. The name comes from a French gun position built to defend the entrance to the Lagoon nearby. From here there is a fine view of the monastery of Vlaherna and, beyond it, Pondikonissi or Mouse Island.

The Achilleion was originally designed as a villa in 1890 for the Empress of Austria. Empress Elizabeth, affectionately called "Sissi," was a lovely Bavarian princess who married Franz Josef of Austria. She found court life too stiff and formal, so she spent many years travelling and vacationing in splendid places like this one.

The gardens here are filled with flowers, trees and statues in the Italian style, and the views are hard to match. Elizabeth was assassinated by an anarchist in 1898, and her villa was bought by Kaiser Wilhelm II of Germany. Wilhelm enjoyed annual vacations here until the outbreak of World War I.

The pretty town of Paleokastritsa looks westward over the bay from an ancient promontory. Trees and rocks along the coastline offer great promise for any artist. But then, Corfu is beautiful no matter where you look. According to local legend, the rocky island in nearby Paleokastritsa Bay is the ship of Odysseus turned to stone by Poseidon. Homer's *Odyssey* and Shakespeare's *Tempest* present it as a near paradise. Once you have seen it for yourself, how could you doubt their insight?

Places of Interest

Corfu possesses a far more temperate climate than other Greek isles. The island is dotted with cypress and olive trees, and the air is perfumed with the scent of orange and lemon groves.

ACHILLEION PALACE

This neoclassical palace with formal Italian gardens was built for Empress Elisabeth of Austria. Kaiser Wilhelm II acquired the palace after the Empress's assassination in 1898.

ESPLANADE (SPIANADA SQUARE)

The French planted the palm trees in Corfu's main square, which also boasts an English cricket pitch dating from British rule.

KINOPIASTES VILLAGE

This mountain village offers dramatic island views and is home to stately mansions and simple rural houses.

CHURCH OF ST. SPYRIDON

The 16th-century church houses the remains of the island's patron saint.

PALEOKASTRITSA

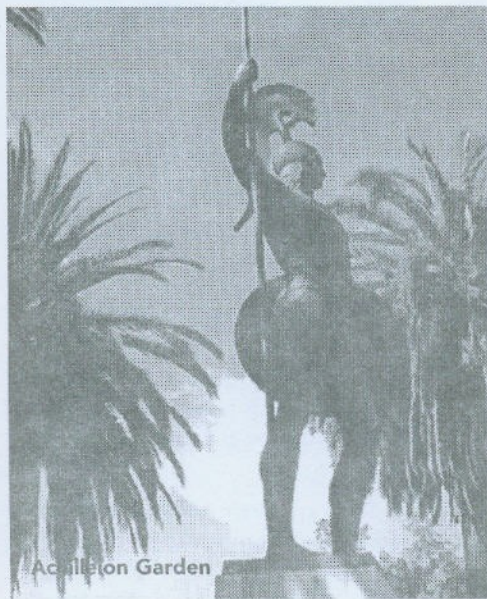
The coves near this cliff-top village offer some of the finest scenery in the entire Mediterranean.

MONASTERY OF THE VIRGIN MARY

Founded in 1288, the present monastery building was erected in the 18th century. The chapel has a fine collection of icons and religious painting.

MON REPOS PALACE

This former royal palace — birthplace of Prince Philip — houses the Paleopolis Museum. The lush gardens include ancient Greek temples and a Byzantine Town.



Practical Information

DOCKING

Your Princess ship docks in Corfu. The town is approximately two miles away.

SHORE EXCURSION DEPARTURES

Passengers will meet at a specific location for each shore excursion departure. Please refer to your tour ticket and the Princess Patter for the correct place and time.

TAXIS

Taxis are available throughout the city. Most drivers speak limited English and accept local currency, and U.S. dollars. Confirm your fare with driver before departing.

SHOPPING

Shopping in Corfu revolves around traditional handiwork. You will find good buys in:

Handicrafts: Numerous Greek items, especially pottery

Reproduction: Hand-painted icons of Byzantine originals

Gold: Ancient and Byzantine designs

Textile: Rugs and embroidered linens

The best place to shop is in the town of Corfu, approximately two miles away. Lido Moda in the city center sells clothes, while Tsonas, Chrysothiki and Vasilakis, all located in Old Town, offer leather goods, jewelry and liquor respectively. It is prohibited by law to remove antiquities or Byzantine icons from Greece.

OPENING AND CLOSING TIMES

Banks: The nearest banks are located in the city center. Generally open from 8:00 a.m. to 2:00 p.m. Monday through Friday."

Shops: Most shops are open Monday through Friday from 9:00 a.m. to 2:00 p.m. and, on Tuesday, Thursday and Friday, shops reopen from 5:30 p.m. to 8:30 p.m.; open Saturdays from 9:00 a.m. to 2:00 p.m.; only jewelry and souvenir shops open on Sundays.

Post Office: Located on Alexandras Avenue in the town of Corfu. Open Monday through Friday from 8:00 a.m. to 2:00 p.m.

LOCAL CUISINE

Food Specialties

Meals in Greece are a time to indulge and enjoy. Some recommended foods are:

Tzatziki: Well-known appetizer made with yogurt, cucumbers and garlic

Pastitsio: A baked dish of minced lamb and macaroni

Moussaka: Minced meat and vegetables served with rich cheese

Gemista: Cooked tomatoes or peppers, usually stuffed with ground lamb

Drink Specialties

Wine is a centerpiece of Greek life. Retsina, a strong, aromatic resonated wine, is the national taste. You may prefer the kokkino (red) and aspro (white) wines, which are inexpensive and quite satisfying. Ouzo, a clear licorice-flavor liqueur, is the favorite aperitif. Sip it slowly over a plate of mezedes or appetizers.

Other popular drink specialties include:

Brandy: Metaxa

Mavrodaphne: A heavy dessert wine

Koum Kouat Liquor: A local specialty. The Koum Kouat is a citrus fruit that only grows in Corfu and is made into one of the island's most famous liquors.

It is always recommended that you drink bottled water while in port.

TIPPING

Suggested tipping is 15 to 20 percent for good service.

SOME USEFUL WORDS

YesMalista or Ne
NoOchi
PleaseParakalo
Thank youEfharisto
Good morningKalimera

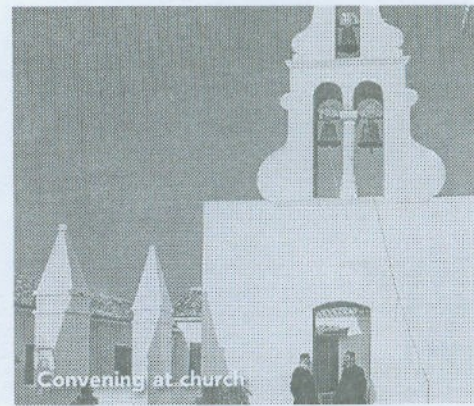
CLIMATE

As the northernmost island of Greece, Corfu has a different climate from the rest of the country. Summers are cooler, with temperatures rarely exceeding 90 degrees F, and winters experience greater rainfall. However, the island's humidity is similar to that of its Ionian Islands.

PRINCESS CRUISES AGENTS

In case of emergency while you are ashore, please contact:

Inchape Shipping Services
66 Ethnikis Paleokastritsas Street
Corfu,
GREECE
49100
Telephone: 33 6610 44611
Telefax: 30 6610 35138





© Maps.com 2008
*Map not to scale

